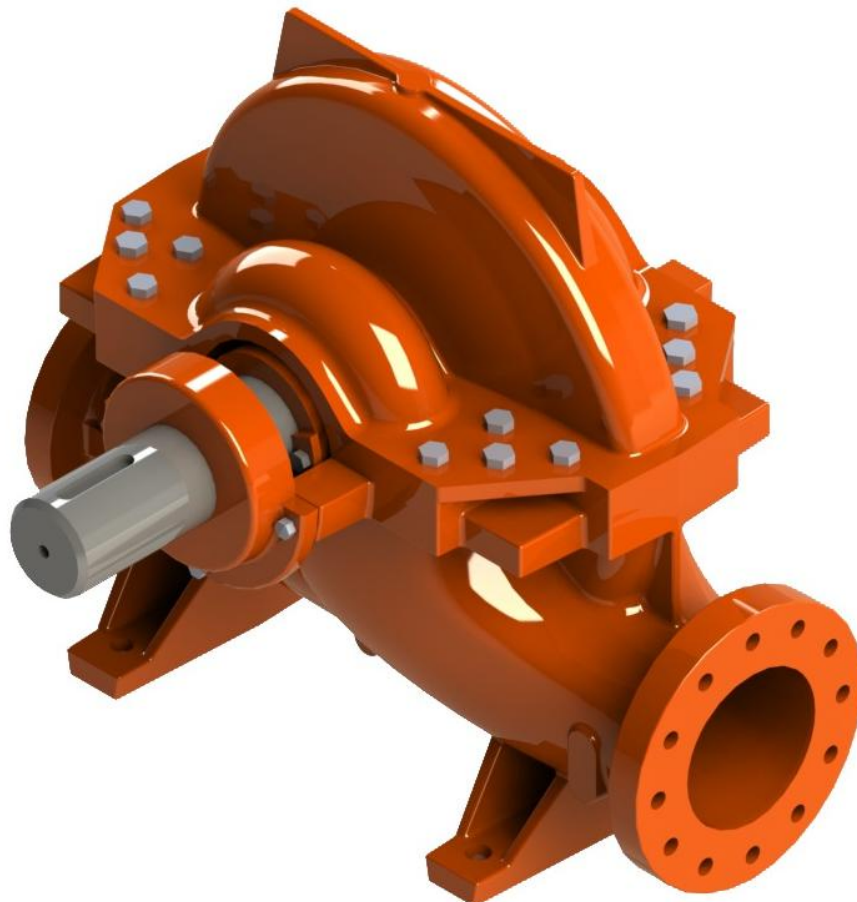


**(( SINGLE- STAGE DOUBLE- SUCTION SPLIT  
CASING PUMPS ))**

**(BB1)**

- **Power:** 30 to 2000 kw
- **Capacity:** up to 1200 l/s
- **Head:** up to 180m
- **Outlet dia.:** up to 1000mm



## 150 Series Single-Stage Double-Suction Split Case Pump Performance

No.	Pump Type		Capacity		Head (m)	Speed (r/min)	Motor Power (kw)	Eff. (%)	Weight (kg)
			(m <sup>3</sup> /h)	(L/s)					
1	150-280		160.0	44.4	27.5	1480	37	87	347
			443.5	123.2	21				
			690.0	169.2	14.2				
2		A	150.5	41.8	25.0		30	86	
			410.6	114.0	18.0				
			550.0	152.8	12.5				
3		B	130.0	36.1	22.5		22	84	
			367.0	101.9	15.0				
			480.0	133.3	11.7				
4		C	123.0	34.1	17.4		18.5	77	
			338.2	93.9	11.5				
			395.0	109.7	10.0				
5	150-350		180.0	50.0	45.8	1480	75	85	410
			447.5	124.3	38.0				
			592.0	164.4	31.2				
6		A	175.0	48.6	38.6		55	83	
			404.2	112.3	31.0				
			580.0	161.1	22.4				
7		B	162.0	45.0	33.1		37	81	
			363.0	100.8	25.0				
			495.0	137.5	18.1				
8		C	150.0	41.7	27.8		30	78	
			324.7	90.2	20.0				
			421.0	116.9	14.9				
9	150-400		200	56	205	1480	250	70	370
			280	78	195				
			340	94	181				
10		A	160	44	178		200	69	
			260	72	166				
			310	86	153				
11		B	140	39	148		160	68	
			235	65	139				
			280	78	133				
12		C	130	36	131		132	67	
			225	63	120				
			250	69	113				
13	150-450		200.0	55.6	76.1	1480	132	82	520
			515.5	143.2	66.0				
			640.0	177.8	57.1				
14		A	190.0	52.8	64.0		110	81	
			468.4	130.1	54.5				
			600.0	166.7	45.0				
15		B	180.0	50.0	52.3		75	80	
			418.5	116.3	43.5				
			540.0	150.0	35.0				
16		C	175.0	48.6	42.1		55	78.5	
			375.4	104.3	35.0				
			468.0	130.0	27.8				
17	150-620		300.0	83.0	135.0	1480	310	74	600
			490.0	136.0	128.0				
			600.0	167.0	118.0				
18		A	290.0	81.0	120.0		250	73	
			480.0	133.0	113.0				
			580.0	161.0	105.0				
19		B	280.0	78.0	111.0		220	72	
			460.0	128.0	104.0				
			560.0	156.0	96.0				
20		C	260.0	72.0	99.0		175	71	
			430.0	119.0	92.0				
			520.0	144.0	86.0				

## 200 Series Single-Stage Double-Suction Split Case Pump Performance

No.	Pump Type		Capacity		Head (m)	Speed (r/min)	Motor Power (kw)	Eff. (%)	Weight (kg)
			(m <sup>3</sup> /h)	(L/s)					
1	<b>200-340</b>		250.0	69.4	40.0	1480	75	87.5	590
			695.5	193.2	30.0				
			940.0	261.1	20.0				
2		A	240.0	66.7	35.0		75	86.5	
			641.2	178.1	25.5				
			845.0	234.7	17.5				
3		B	230.0	63.9	30.8		55	85	
			586.0	162.8	21.3				
			750.0	208.3	16.0				
4		C	220.0	61.1	25.0		37	79	
			530.0	147.2	17.0				
			610.0	169.4	15.1				
5	<b>200-410</b>		265.0	73.6	62.8	1480	132	86.5	620
			710.0	197.2	52.0				
			990.0	275.0	40.0				
6		A	249.0	69.1	55.0		110	84.5	
			641.9	178.3	42.5				
			895.0	248.6	30.9				
7		B	238.0	66.1	46.0		90	83	
			586.6	163.0	35.5				
			780.0	216.7	25.0				
8		C	220.0	61.1	38.5		75	81	
			525.6	146.0	28.5				
			660.0	166.7	21.0				
9	<b>200-530</b>		475.0	131.9	102.0	1480	280	83	840
			818.0	227.2	91.0				
			1080.0	300.0	77.5				
10		A	460.0	127.8	86.0		250	82	
			750.0	208.3	76.5				
			965.0	268.1	66.2				
11		B	440.0	122.2	71.0		200	80	
			687.9	191.1	62.5				
			905.0	251.4	52.1				
12		C	420.0	116.7	55.0		132	78.5	
			630.0	175.0	47.5				
			795.0	220.8	41.8				
13	<b>200-620</b>		250.0	69.4	156.0	1480	400	79	1000
			721.2	200.2	132.5				
			860.0	238.9	120.0				
14		A	240.0	66.7	132.0		355	78.5	
			670.6	186.2	114.5				
			790.0	219.4	103.0				
15		B	230.0	63.9	114.0		250	78	
			621.0	172.7	98.5				
			720.0	200.0	90.0				
16		C	215.0	59.7	98.0		200	77	
			570.0	158.5	83.0				
			690.0	191.7	72.0				

## *250 Series Single-Stage Double-Suction Split Case Pump Performance*

No.	Pump Type		Capacity		Head (m)	Speed (r/min)	Motor Power (kw)	Eff. (%)	Weight (kg)
			(m <sup>3</sup> /h)	(L/s)					
1	250-390		400.0	111.1	50.0	1480	160	88	810
			1052.0	292.2	39.0				
			1450.0	402.8	28.0				
2	A		380.0	105.6	44.9				
			967.7	268.8	33.0				
			1310.0	363.9	24.0				
3	B		379.0	105.3	38.0				
			915.3	254.3	27.0				
			1160.0	322.2	20.2				
4	C		350.0	97.2	31.8				
			843.3	234.3	20.0				
			990.0	275.0	16.1				
5	250-470		420.0	116.7	82.8	1480	280	87	930
			1174.5	326.3	66.0				
			1608.0	447	50.0				
6	A		400.0	111.1	69.0				
			1072.2	297.8	55.0				
			1450.0	402.8	41.6				
7	B		370.0	102.8	58.0				
			975.2	270.9	45.5				
			1250.0	347.2	36.0				
8	C		330.0	91.7	49.6				
			903.3	250.9	37.5				
			1090.0	302.8	31.2				
9	250-550		900	250	98	1480	400	85	990
			1150	319	90				
			1350	375	81				
10	A		850	236	99				
			1100	306	81				
			1300	361	70				
11	B		800	222	82				
			1050	292	74				
			1250	347	32				
12	C		750	208	74				
			1000	278	67				
			1200	333	58				

## *300 Series Single-Stage Double-Suction Split Case Pump Performance*

No.	Pump Type		Capacity		Head (m)	Speed (r/min)	Motor Power (kw)	Eff. (%)	Weight (kg)	
			(m <sup>3</sup> /h)	(L/s)						
1	<b>300-330</b>			500.0 1099.0 1475.0	138.9 305.3 409.7	36.0 24.5 17.0	1480	110	86	900
2			A	480.0 1020.0 1425.0	133.3 283.3 395.8	31.8 19.8 12.1		90	84.5	
3			B	460.0 970.0 1290.0	127.8 269.4 358.3	26.5 15.5 9.0		75	82	
4			C	440.0 920.0 1170.0	122.2 255.6 325.0	22.3 11.5 7.5		45	80	
5	<b>300-450</b>			700.0 1678.5 2380.0	194.4 466.3 661.1	67.5 53.0 37.0	1480	315	88	1400
6			A	660.0 1576.8 2100.0	183.3 438.0 583.3	59.2 45.0 32.0		280	86.5	
7			B	620.0 1476.0 1800.0	172.2 410.0 500.0	50.0 36.5 27.5		200	84	
8			C	600.0 1360.8 1450.0	166.7 378.0 402.8	41.0 27.5 24.5		160	79	
9	<b>300-550</b>			700.0 1750.0 2350.0	194.4 486.1 652.8	115.0 94.0 76.0	1480	630	86	2097
10			A	680.0 1645.0 2170.0	188.9 457.0 602.8	92.0 76.0 61.5		450	85.5	
11			B	650.0 1573.2 2130.0	180.6 437.0 591.7	77.5 62.0 47.0		355	85	
12			C	620.0 1515.0 1980.0	172.2 421.0 550.0	65.0 50.0 37.5		280	83.5	