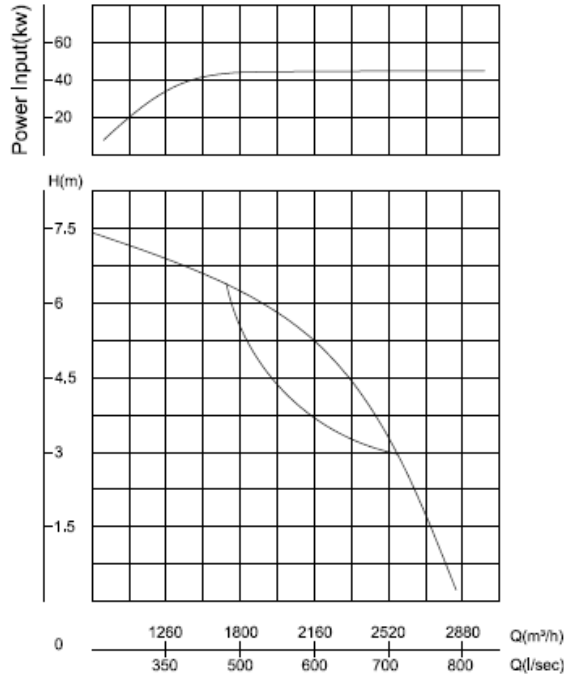


***«MIXED-FLOW SUBMERSIBLE
ELECTRIC PUMPS»***



Mixed-Flow Electric Pumps

450/45/400 (900rpm)



Product

Centerage Submersible Propeller Pumps are specially designed for handling high flow rates at low delivery heads. They are suitable for pumping clear water or lightly contaminated water.

Denomination

Product code

MF 450/45/400

Process data

Liquid temperature +40°C up to +75°C
The PH of the liquid PH5-8

Motor data

Squirrel cage 3-phase induction motor
Frequency 50HZ
Insulation class H (+180°C)
Ingress of protection IP 68
Voltage variation
-continuously running Max ±5%
-intermittent running Max ±10%

Voltage imbalance between phases max 2%
No. of start/hour max 3

Monitoring equipment

Thermal & humidity contacts

Material

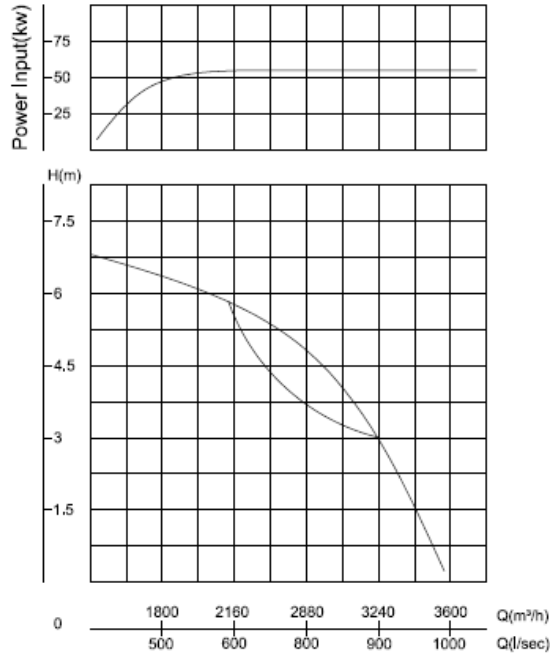
Pump housing Cast iron GG25
Impeller Stainless Steel 316
Shaft Stainless steel 316

Rating

3~ 380 V
Speed of rotation 900 rpm

Mixed-Flow Electric Pumps

500/55/600 (900rpm)



Product

Centerage Submersible Propeller Pumps are specially designed for handling high flow rates at low delivery heads. They are suitable for pumping clear water or lightly contaminated water.

Denomination

Product code

MF 500/55/600

Process data

Liquid temperature +40°C up to +75°C
 The PH of the liquid PH5-8

Motor data

Squirrel cage 3-phase induction motor
 Frequency 50HZ
 Insulation class H (+180°C)
 Ingress of protection IP 68
 Voltage variation
 -continuously running Max ±5%
 -intermittent running Max ±10%
 Voltage imbalance between phases max 2%
 No. of start/hour max 3

Monitoring equipment

Thermal & humidity contacts

Material

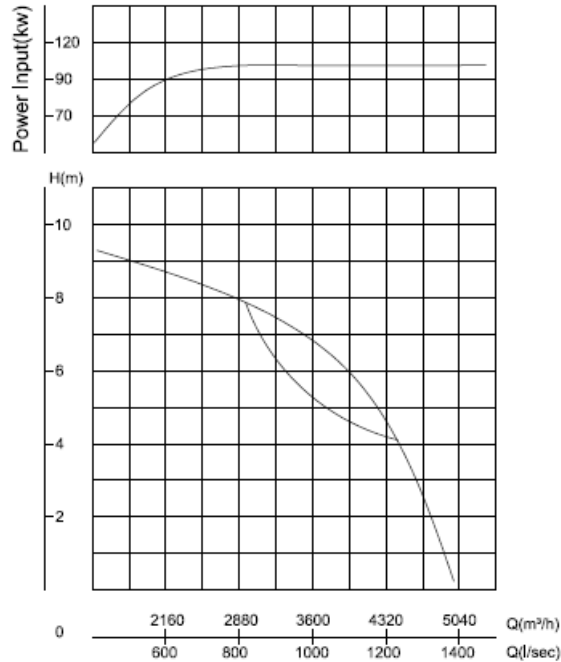
Pump housing Cast iron GG25
 Impeller Stainless Steel 316
 Shaft Stainless steel 316

Rating

3~ 380 V
 Speed of rotation 900rpm

Mixed-Flow Electric Pumps

500/110/700 (900rpm)



Product

Centerage Submersible Propeller Pumps are specially designed for handling high flow rates at low delivery heads. They are suitable for pumping clear water or lightly contaminated water.

Denomination

Product code

MF 500/110/700

Process data

Liquid temperature +40°C up to +75°C
The PH of the liquid PH5-8

Motor data

Squirrel cage 3-phase induction motor
Frequency 50HZ
Insulation class H (+180°C)
Ingress of protection IP 68
Voltage variation
-continuously running Max ±5%
-intermittent running Max ±10%

Voltage imbalance between phases max 2%
No. of start/hour max 3

Monitoring equipment

Thermal & humidity contacts

Material

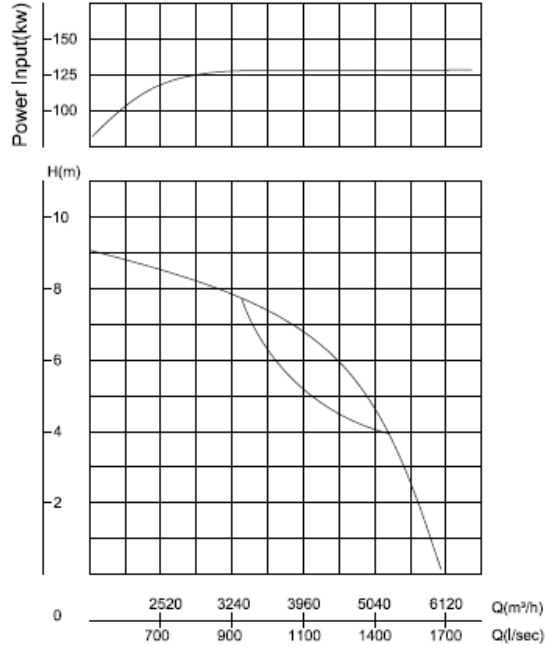
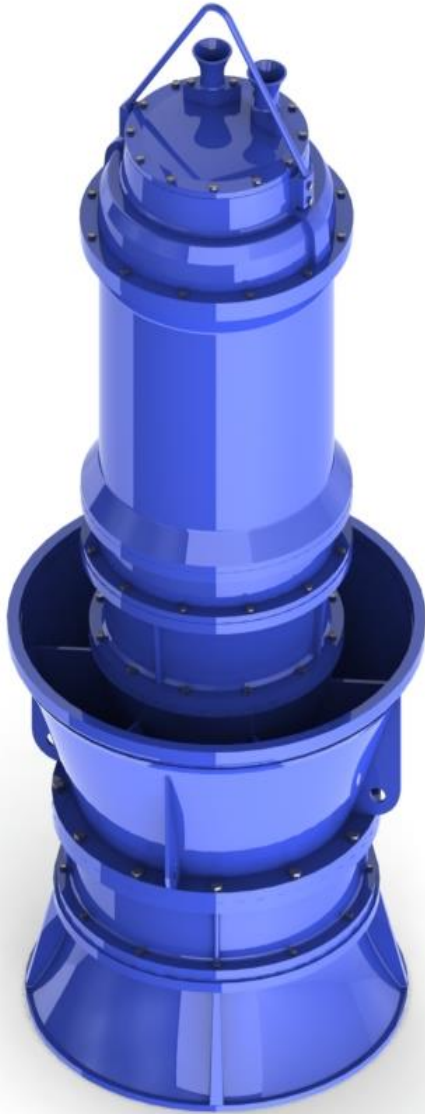
Pump housing Cast iron GG25
Impeller Stainless Steel 316
Shaft Stainless steel 316

Rating

3~ 380/660 V
Speed of rotation 900rpm

Mixed-Flow Electric Pumps

550/132/700 (900rpm)



Product

Centerage Submersible Propeller Pumps are specially designed for handling high flow rates at low delivery heads. They are suitable for pumping clear water or lightly contaminated water.

Denomination

Product code

MF 550/132/700

Process data

Liquid temperature +40°C up to +75°C
The PH of the liquid PH5-8

Motor data

Squirrel cage 3-phase induction motor
Frequency 50HZ
Insulation class H (+180°C)
Ingress of protection IP 68
Voltage variation
-continuously running Max ±5%
-intermittent running Max ±10%

Voltage imbalance between phases max 2%
No. of start/hour max 3

Monitoring equipment

Thermal & humidity contacts

Material

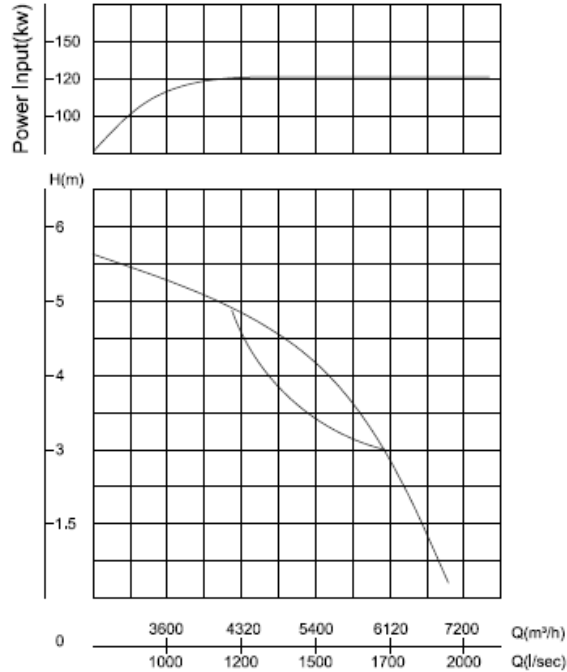
Pump housing Cast iron GG25
Impeller Stainless Steel 316
Shaft Stainless steel 316

Rating

3~ 380/660 V
Speed of rotation 900rpm

Mixed-Flow Electric Pumps

500/132/800 (900rpm)



Product

Centerage Submersible Propeller Pumps are specially designed for handling high flow rates at low delivery heads. They are suitable for pumping clear water or lightly contaminated water.

Denomination

Product code

MF 500/132/800

Process data

Liquid temperature +40°C up to +75°C
 The PH of the liquid PH5-8

Motor data

Squirrel cage 3-phase induction motor
 Frequency 50HZ
 Insulation class H (+180°C)
 Ingress of protection IP 68
 Voltage variation
 -continuously running Max ±5%
 -intermittent running Max ±10%

Voltage imbalance between phases max 2%
 No. of start/hour max 3

Monitoring equipment

Thermal & humidity contacts

Material

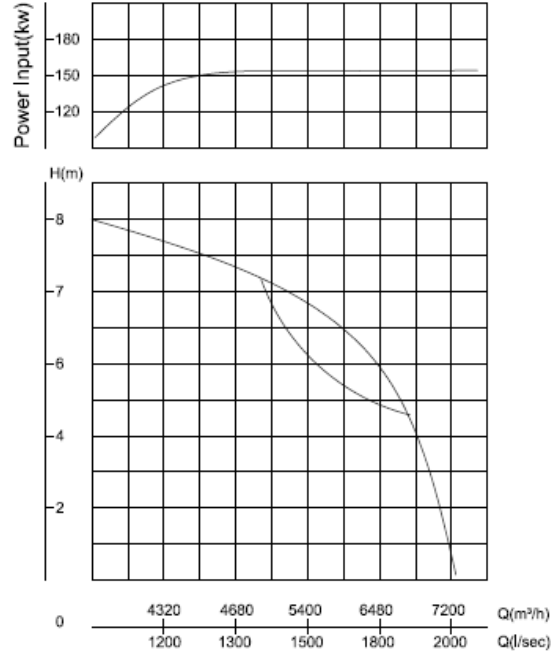
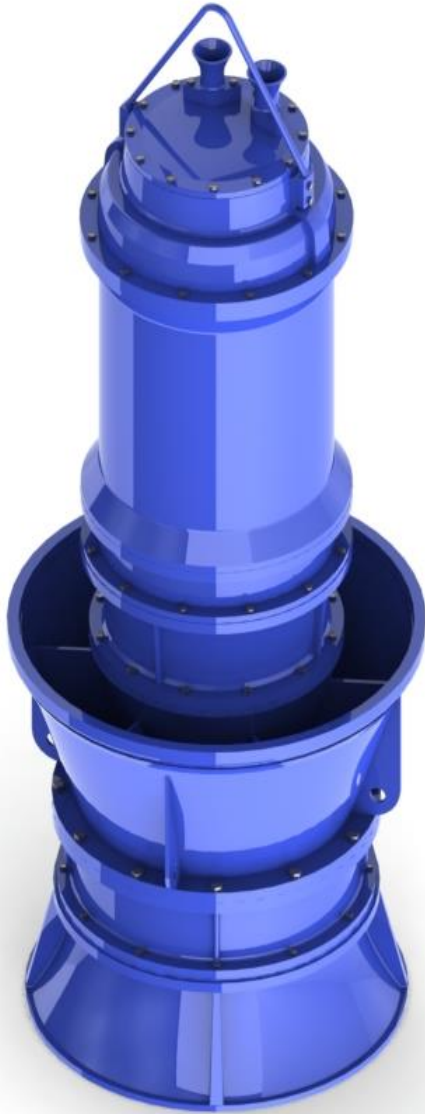
Pump housing Cast iron GG25
 Impeller Stainless Steel 316
 Shaft Stainless steel 316

Rating

3~ 380/660 V
 Speed of rotation 900rpm

Mixed-Flow Electric Pumps

600/160/800 (900rpm)



Product

Centerage Submersible Propeller Pumps are specially designed for handling high flow rates at low delivery heads. They are suitable for pumping clear water or lightly contaminated water.

Denomination

Product code

MF 600/160/800

Process data

Liquid temperature +40°C up to +75°C
 The PH of the liquid PH5-8

Motor data

Squirrel cage 3-phase induction motor
 Frequency 50HZ
 Insulation class H (+180°C)
 Ingress of protection IP 68
 Voltage variation
 -continuously running Max ±5%
 -intermittent running Max ±10%

Voltage imbalance between phases max 2%
 No. of start/hour max 3

Monitoring equipment

Thermal & humidity contacts

Material

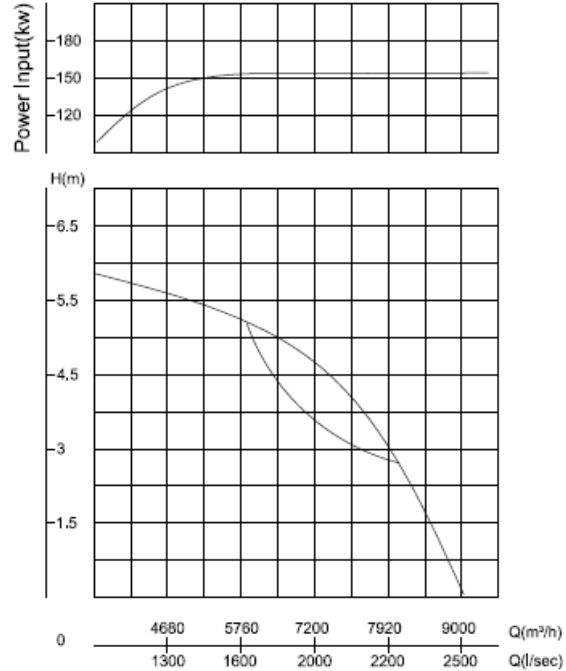
Pump housing Cast iron GG25
 Impeller Stainless Steel 316
 Shaft Stainless steel 316

Rating

3~ 380/660 V
 Speed of rotation 900rpm

Mixed-Flow Electric Pumps

500/160/900 (900rpm)



Product

Centerage Submersible Propeller Pumps are specially designed for handling high flow rates at low delivery heads. They are suitable for pumping clear water or lightly contaminated water.

Denomination

Product code

MF 500/160/900

Process data

Liquid temperature +40°C up to +75°C
The PH of the liquid PH5-8

Motor data

Squirrel cage 3-phase induction motor
Frequency 50HZ
Insulation class H (+180°C)
Ingress of protection IP 68
Voltage variation
-continuously running Max ±5%
-intermittent running Max ±10%

Voltage imbalance between phases max 2%
No. of start/hour max 3

Monitoring equipment

Thermal & humidity contacts

Material

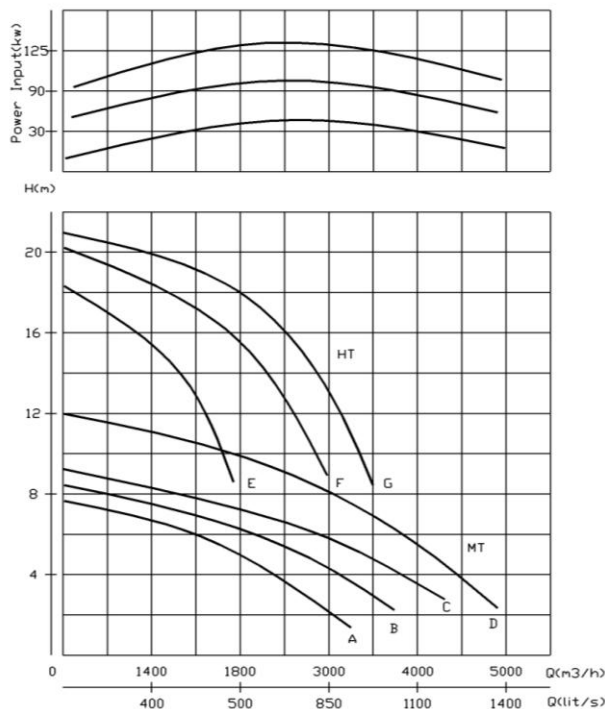
Pump housing Cast iron GG25
Impeller Stainless Steel 316
Shaft Stainless steel 316

Rating

3~ 380/660 V
Speed of rotation 900rpm

Mixed-Flow Electric Pumps

37~132 KW (730/900 rpm)



Product

Centerage Submersible Propeller Pumps are specially designed for handling high flow rates at low delivery heads. They are suitable for pumping clear water or lightly contaminated water.

Denomination

Product code

MT-A 37 /500	HT-E 75 /500
MT-B 55/600	HT-F 90/500
MT-C 90/700	HT-G 132/600
MT-D 132/800	

Discharge connection	500 ~ 800 mm
Well pipe dia.:	700~900 mm

Process data

Liquid temperature	+40°C up to +75°C
The PH of the liquid	PH5-8

Motor data

Squirrel cage 3-phase induction motor	
Frequency	50HZ
Insulation class	H (+180°C)
Ingress of protection	IP 68
Voltage variation	
-continuously running	Max ±5%
-intermittent running	Max ±10%
Voltage imbalance between phases max 2%	
No. of start/hour	max 3

Monitoring equipment

Thermal & humidity contacts

Material

Pump housing	Cast iron GG25
Impeller	Stainless Steel 316
Shaft	Stainless steel 316

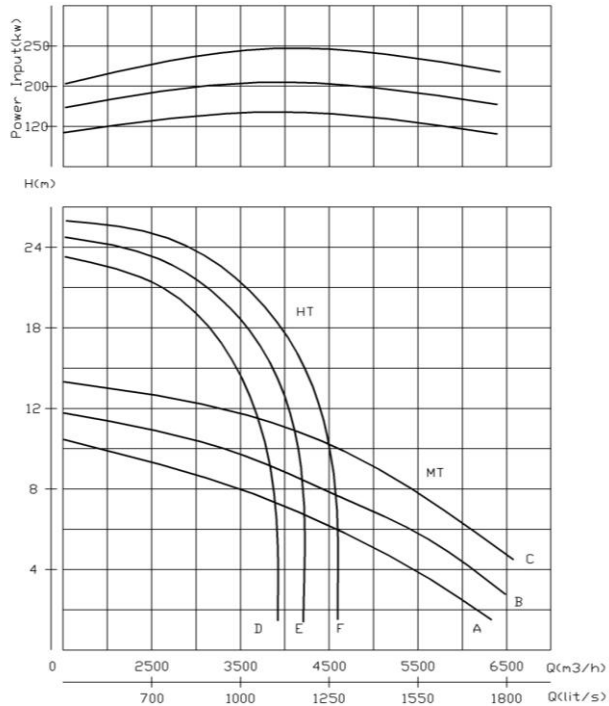
Rating

3~ Speed of rotation	730/900 rpm
-------------------------	-------------



Mixed-Flow Electric Pumps

132~250 KW (730/900/1450 rpm)



Product

Centerage Submersible Propeller Pumps are specially designed for handling high flow rates at low delivery heads. They are suitable for pumping clear water or lightly contaminated water.

Denomination

Product code

MT-A 132/750	HT-D 132/600
MT-B 200/800	HT-E 200/650
MT-C 250/900~1000	HT-F 250/750

Discharge connection	600 ~ 1000 mm
Well pipe dia.:	1200 mm

Process data

Liquid temperature	+40°C up to +75°C
The PH of the liquid	PH5-8

Motor data

Squirrel cage 3-phase induction motor	
Frequency	50HZ
Insulation class	H (+180°C)
Ingress of protection	IP 68
Voltage variation	
-continuously running	Max ±5%
-intermittent running	Max ±10%
Voltage imbalance between phases max 2%	
No. of start/hour	max 3

Monitoring equipment

Thermal & humidity contacts

Material

Pump housing	Cast iron GG25
Impeller	Stainless Steel 316
Shaft	Stainless steel 316

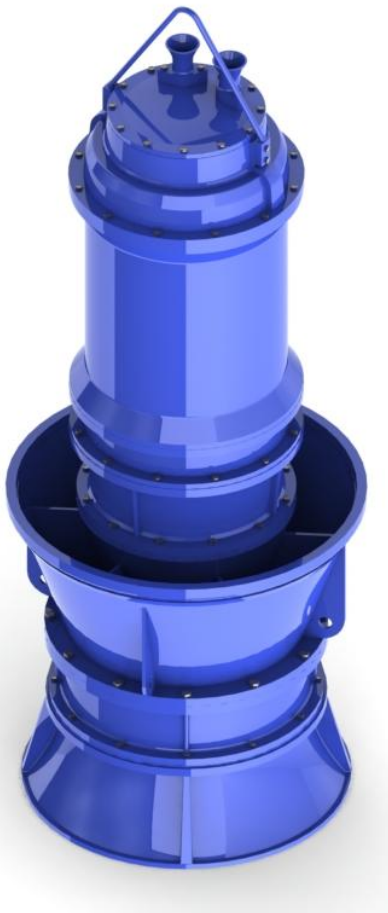
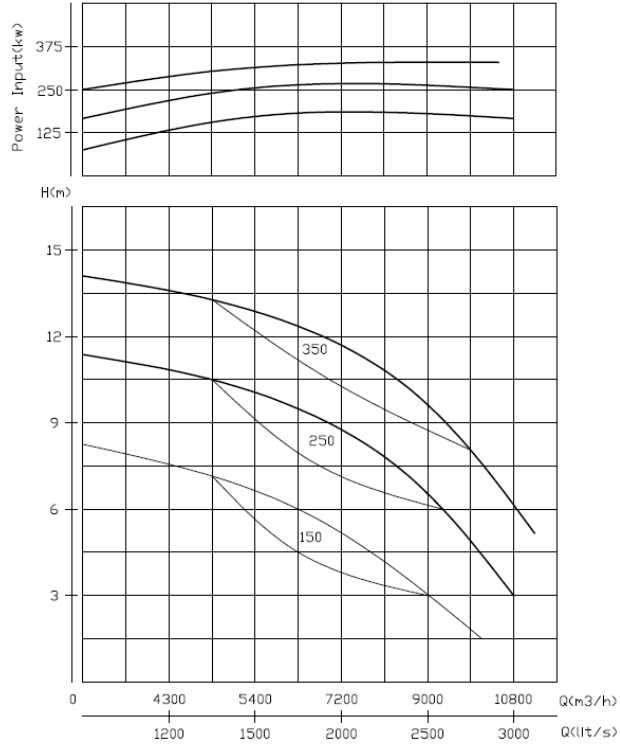
Rating

3~ Speed of rotation	730/900/1450 rpm
-------------------------	------------------



Mixed-Flow Electric Pumps

150~250~350 KW (590 rpm)



Product

Centerage Submersible Propeller Pumps are specially designed for handling high flow rates at low delivery heads. They are suitable for pumping clear water or lightly contaminated water.

Denomination

Product code MF 150/2000
 MF 250/2000
 MF 350/2000

Discharge connection 1400 mm
 Well pipe dia.: 2000 mm

Process data

Liquid temperature +40°C up to +75°C
 The PH of the liquid PH5-8

Motor data

Squirrel cage 3-phase induction motor
 Frequency 50HZ
 Insulation class H (+180°C)
 Ingress of protection IP 68
 Voltage variation
 -continuously running Max ±5%
 -intermittent running Max ±10%
 Voltage imbalance between phases max 2%
 No. of start/hour max 3

Monitoring equipment

Thermal & humidity contacts

Material

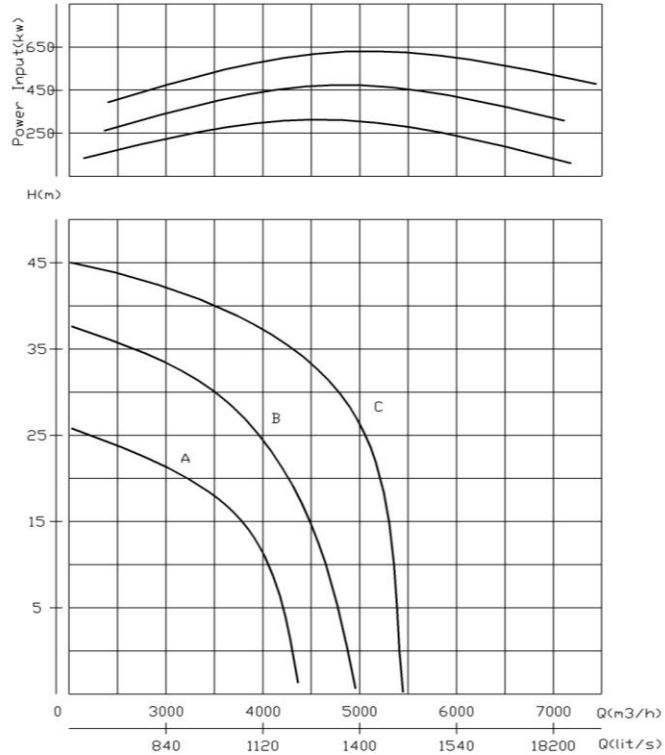
Pump housing Cast iron GG25
 Impeller Stainless Steel 316
 Shaft Stainless steel 316

Rating

3~
 Speed of rotation 590 rpm

Mixed-Flow Electric Pumps

250~650 KW (410/730/900 rpm)



Product

Centerage Submersible Propeller Pumps are specially designed for handling high flow rates at low delivery heads. They are suitable for pumping clear water or lightly contaminated water.

Denomination

Product code HT-A 250/600
 HT-B 450/700
 HT-C 650/800

Discharge connection 600~800 mm
 Well pipe dia.: 1200 mm

Process data

Liquid temperature +40°C up to +75°C
 The PH of the liquid PH5-8

Motor data

Squirrel cage 3-phase induction motor
 Frequency 50HZ
 Insulation class H (+180°C)
 Ingress of protection IP 68
 Voltage variation
 -continuously running Max ±5%
 -intermittent running Max ±10%

Voltage imbalance between phases max 2%
 No. of start/hour max 3

Monitoring equipment

Thermal & humidity contacts

Material

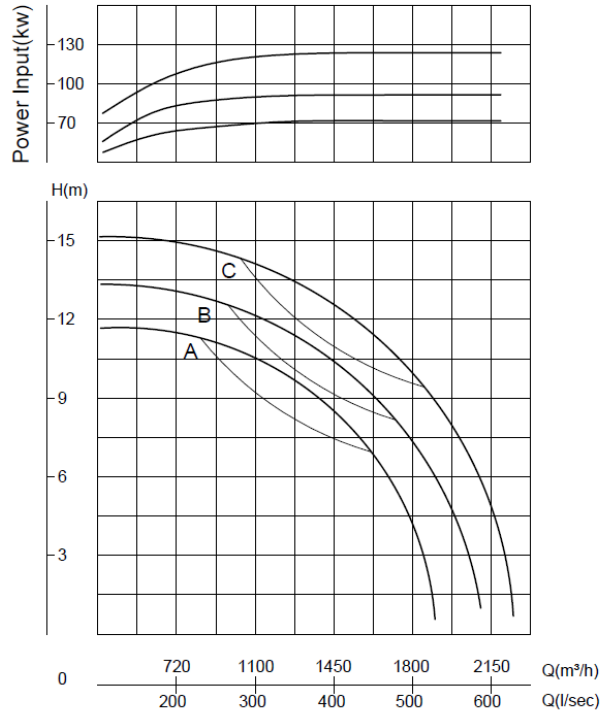
Pump housing Cast iron GG25
 Impeller Stainless Steel 316
 Shaft Stainless steel 316

Rating

3~
 Speed of rotation 410/730/900 rpm

Mixed-Flow Electric Pumps

75 kw / 90 kw / 132 kw (900 rpm)



Product

Centerage Submersible Propeller Pumps are specially designed for handling high flow rates at low delivery heads. They are suitable for pumping clear water or lightly contaminated water.

Denomination

Product code

MT-A 75/600
MT-B 90/600
MT-C 132/600

Process data

Liquid temperature +40°C up to +75°C
The PH of the liquid PH5-8

Motor data

Squirrel cage 3-phase induction motor
Frequency 50HZ
Insulation class H (+180°C)
Ingress of protection IP 68
Voltage variation
-continuously running Max ±5%
-intermittent running Max ±10%

Voltage imbalance between phases max 2%
No. of start/hour max 3

Monitoring equipment

Thermal & humidity contacts

Material

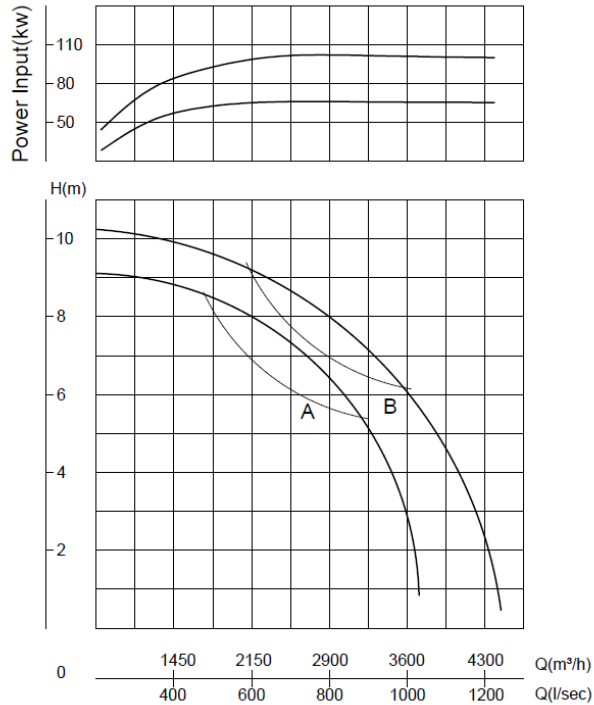
Pump housing Cast iron GG25
Impeller Stainless Steel 316
Shaft Stainless steel 316

Rating

3~ 400/690 V
Speed of rotation 590/730 rpm

Mixed-Flow Electric Pumps

75 kw / 110 kw (900rpm)



Product

Centerage Submersible Propeller Pumps are specially designed for handling high flow rates at low delivery heads. They are suitable for pumping clear water or lightly contaminated water.

Denomination

Product code

MT-A 75/600
 MT-B 110/600

Process data

Liquid temperature +40°C up to +75°C
 The PH of the liquid PH5-8

Motor data

Squirrel cage 3-phase induction motor
 Frequency 50HZ
 Insulation class H (+180°C)
 Ingress of protection IP 68
 Voltage variation
 -continuously running Max ±5%
 -intermittent running Max ±10%

Voltage imbalance between phases max 2%
 No. of start/hour max 3

Monitoring equipment

Thermal & humidity contacts

Material

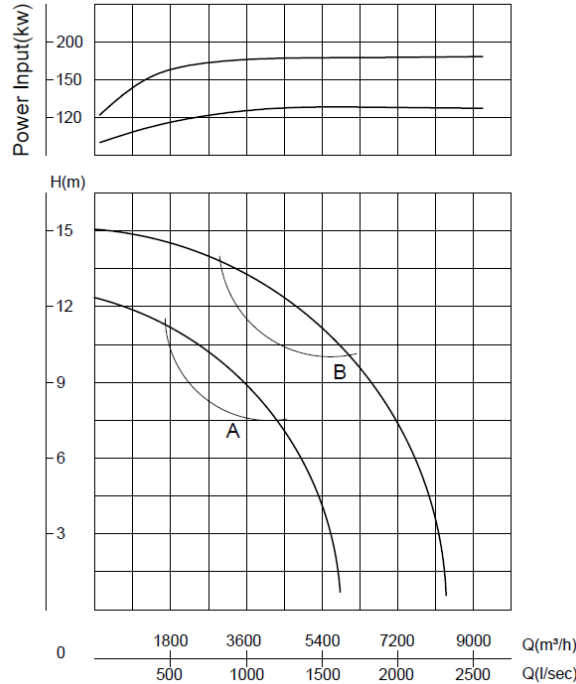
Pump housing Cast iron GG25
 Impeller Stainless Steel 316
 Shaft Stainless steel 316

Rating

3~ 400/690 V
 Speed of rotation 900rpm

Mixed-Flow Electric Pumps

132 kw / 180 kw (900rpm)



Product

Centerage Submersible Propeller Pumps are specially designed for handling high flow rates at low delivery heads. They are suitable for pumping clear water or lightly contaminated water.

Denomination

Product code

MT-A 132/600
MT-B 180/700

Process data

Liquid temperature +40°C up to +75°C
The PH of the liquid PH5-8

Motor data

Squirrel cage 3-phase induction motor
Frequency 50HZ
Insulation class H (+180°C)
Ingress of protection IP 68
Voltage variation
-continuously running Max ±5%
-intermittent running Max ±10%

Voltage imbalance between phases max 2%
No. of start/hour max 3

Monitoring equipment

Thermal & humidity contacts

Material

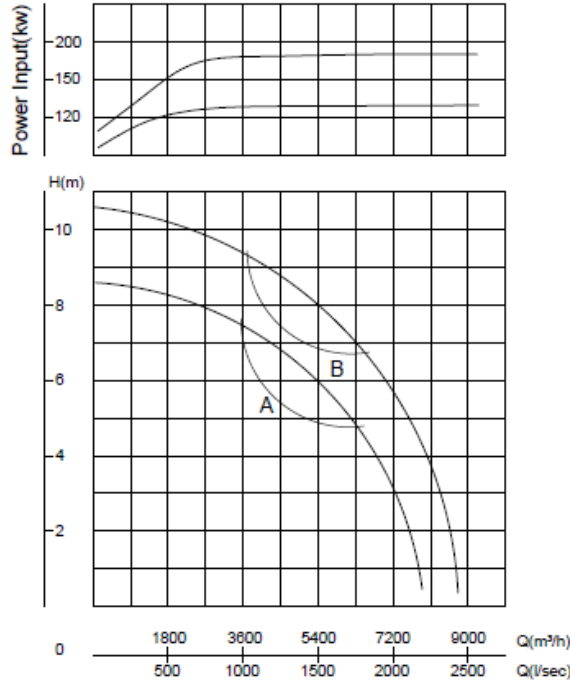
Pump housing Cast iron GG25
Impeller Stainless Steel 316
Shaft Stainless steel 316

Rating

3~ 400/690 V
Speed of rotation 900rpm

Mixed-Flow Electric Pumps

132 kw / 200 kw (900rpm)



Product

Centerage Submersible Propeller Pumps are specially designed for handling high flow rates at low delivery heads. They are suitable for pumping clear water or lightly contaminated water.

Denomination

Product code

MT-A 132/800
MT-B 200/1200

Process data

Liquid temperature +40°C up to +75°C
The PH of the liquid PH5-8

Motor data

Squirrel cage 3-phase induction motor
Frequency 50HZ
Insulation class H (+180°C)
Ingress of protection IP 68
Voltage variation
-continuously running Max ±5%
-intermittent running Max ±10%

Voltage imbalance between phases max 2%
No. of start/hour max 3

Monitoring equipment

Thermal & humidity contacts

Material

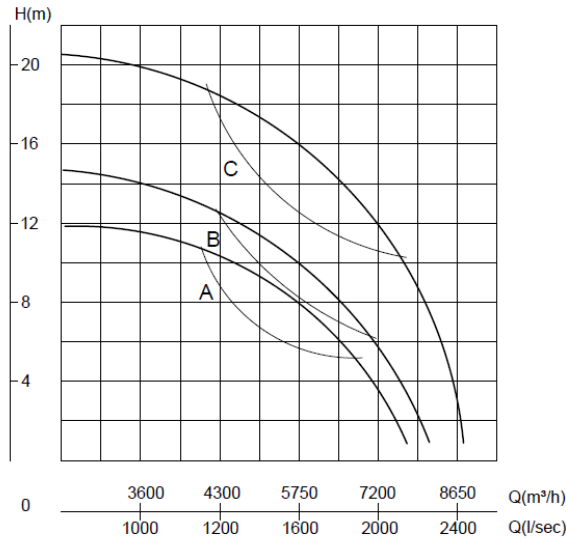
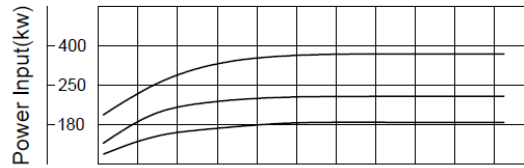
Pump housing Cast iron GG25
Impeller Stainless Steel 316
Shaft Stainless steel 316

Rating

3~ 400/690 V
Speed of rotation 900rpm

Mixed-Flow Electric Pumps

200 kw / 230 kw / 400 kw (730~900 rpm)



Product

Centerage Submersible Propeller Pumps are specially designed for handling high flow rates at low delivery heads. They are suitable for pumping clear water or lightly contaminated water.

Denomination

Product code

MT-A 200/1000
MT-B 230/1000
MT-C 400/1000

Process data

Liquid temperature +40°C up to +75°C
The PH of the liquid PH5-8

Motor data

Squirrel cage 3-phase induction motor
Frequency 50HZ
Insulation class H (+180°C)
Ingress of protection IP 68
Voltage variation
-continuously running Max ±5%
-intermittent running Max ±10%

Voltage imbalance between phases max 2%
No. of start/hour max 3

Monitoring equipment

Thermal & humidity contacts

Material

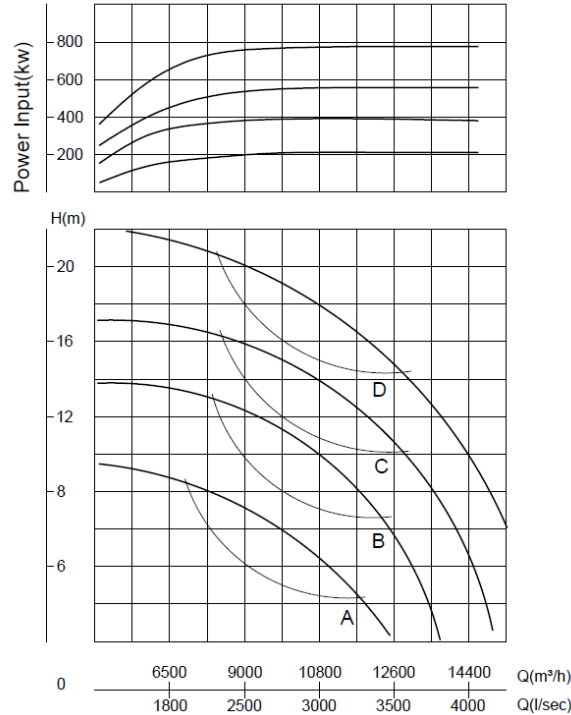
Pump housing Cast iron GG25
Impeller Stainless Steel 316
Shaft Stainless steel 316

Rating

3~ 400/690 V
Speed of rotation 730/900 rpm

Mixed-Flow Electric Pumps

220 kw / 400 kw / 600 kw / 800 kw (590~730 rpm)



Product

Centerage Submersible Propeller Pumps are specially designed for handling high flow rates at low delivery heads. They are suitable for pumping clear water or lightly contaminated water.

Denomination

Product code

MT-A 220/2200
MT-B 400/2200
MT-C 600/2200
MT-D 800/2200

Process data

Liquid temperature +40°C up to +75°C
The PH of the liquid PH5-8

Motor data

Squirrel cage 3-phase induction motor
Frequency 50HZ
Insulation class H (+180°C)
Ingress of protection IP 68
Voltage variation
-continuously running Max ±5%
-intermittent running Max ±10%

Voltage imbalance between phases max 2%
No. of start/hour max 3

Monitoring equipment

Thermal & humidity contacts

Material

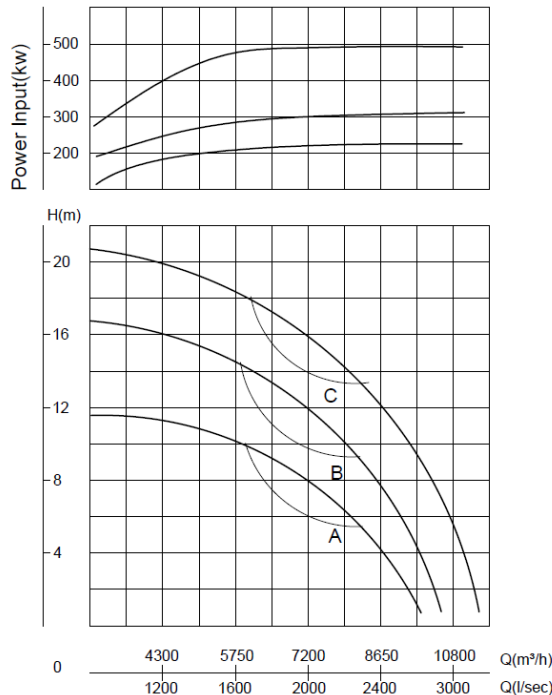
Pump housing Cast iron GG25
Impeller Stainless Steel 316
Shaft Stainless steel 316

Rating

3~ **690/6000 V**
Speed of rotation 590/730 rpm

Mixed-Flow Electric Pumps

250 kw / 350 kw / 550 kw (590~730 rpm)



Product

Centerage Submersible Propeller Pumps are specially designed for handling high flow rates at low delivery heads. They are suitable for pumping clear water or lightly contaminated water.

Denomination

Product code

MT-A 250/1400
MT-B 350/1400
MT-C 550/2000

Process data

Liquid temperature +40°C up to +75°C
The PH of the liquid PH5-8

Motor data

Squirrel cage 3-phase induction motor
Frequency 50HZ
Insulation class H (+180°C)
Ingress of protection IP 68
Voltage variation
-continuously running Max ±5%
-intermittent running Max ±10%

Voltage imbalance between phases max 2%
No. of start/hour max 3

Monitoring equipment

Thermal & humidity contacts

Material

Pump housing Cast iron GG25
Impeller Stainless Steel 316
Shaft Stainless steel 316

Rating

3~ 400/690 V
Speed of rotation 590/730 rpm